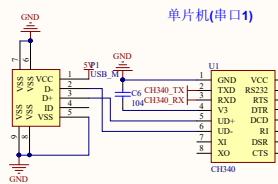
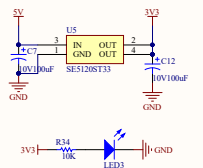


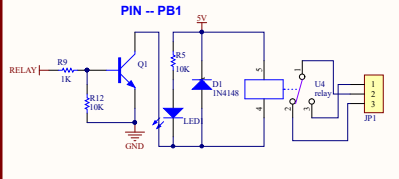
通信下载



3.3V稳压



继电器(5脚10A)



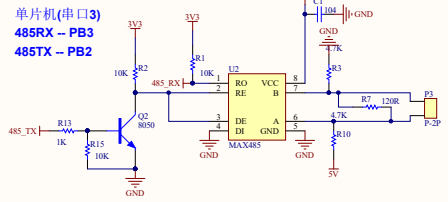
按键(PB5)



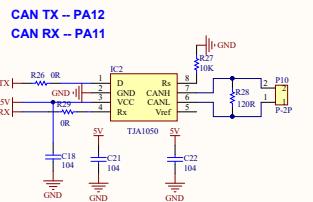
版本:V1.2(预售版)

- 1.增加电源指示灯
- 2.增加RGB缺角标识
- 3.继电器引脚开孔隔离
- 4.解决485接反问题
- 5.复位GSM使用反向二极管

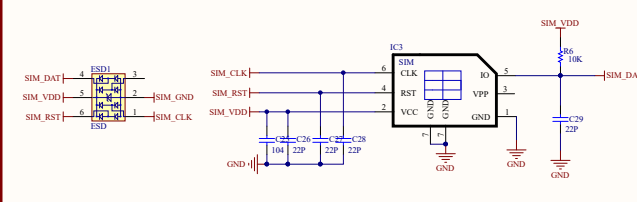
485通信



CAN总线(TJA1050)



SIM卡



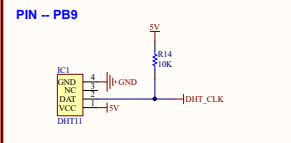
版本:V1.3(出售版)

- 1.修改型号为:ZLBC26A

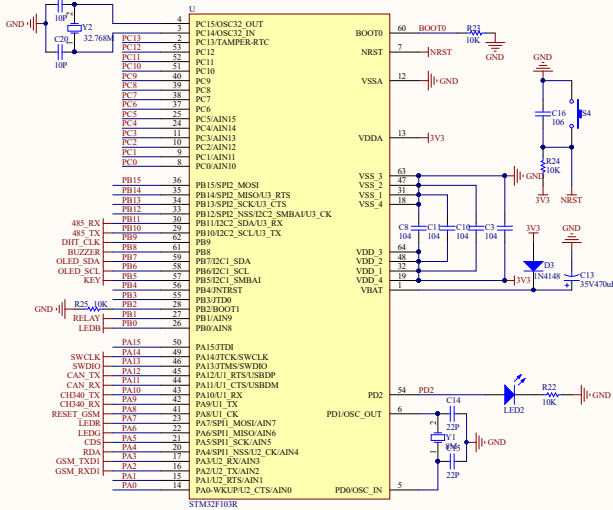
版本:V2.1(出售版)

- 1.去掉蜂鸣器和热释红外
- 2.主控STM32F103CBT6改为STM32F103RET6
- 3.实际使用兼容芯片:AT32F403ARGT7
- 4.引出BC260Y的BOOT引脚

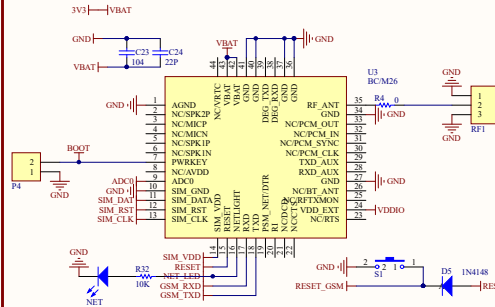
温湿度传感器(DHT11)



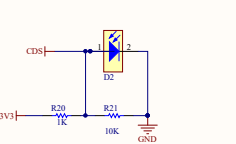
AT32F403ARGT7 STM32F103RE/GT6



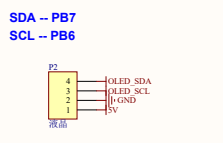
BC260Y



光敏电阻(PA5)



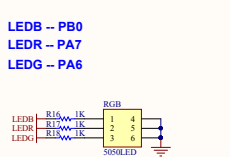
液晶(OLED)



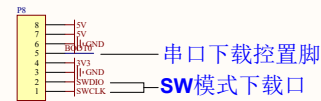
串口通信电平转换



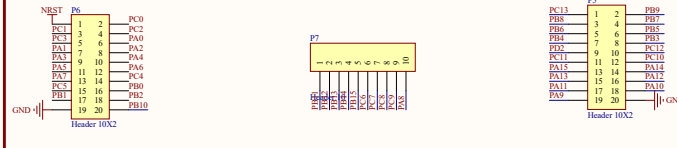
三色灯(RGB)



程序下载



STM32接口



所属系列:指路者系列 型号:ZLBC26A

Title	U-F-M5DD-W-L	
Size	Number	Revision
A2		
Date:	2021/3/31	Sheet of
File:	F:\AluminumDesigner_ZLBC26A_SchDoc	Drawn By: