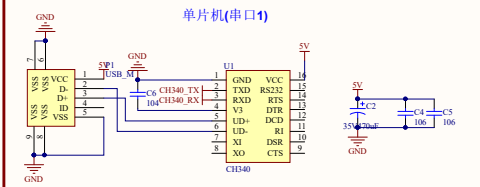
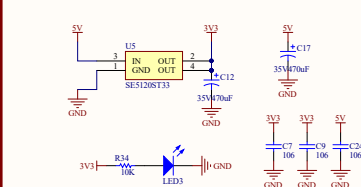


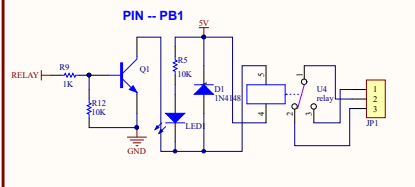
通信下载



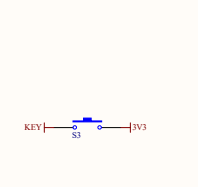
3.3V稳压



继电器(5脚10A)



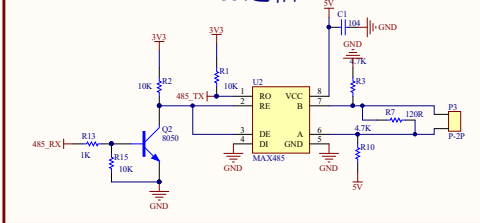
按键



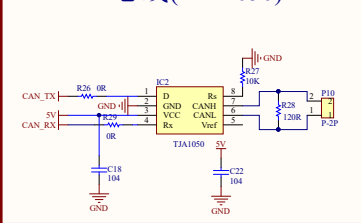
版本:V1.0(预售版)

1.初版测试版

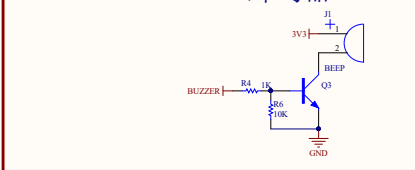
485通信



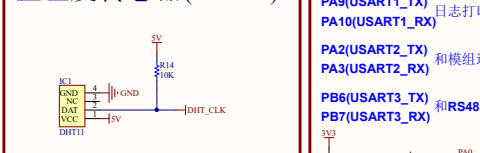
CAN总线(TJA1050)



蜂鸣器



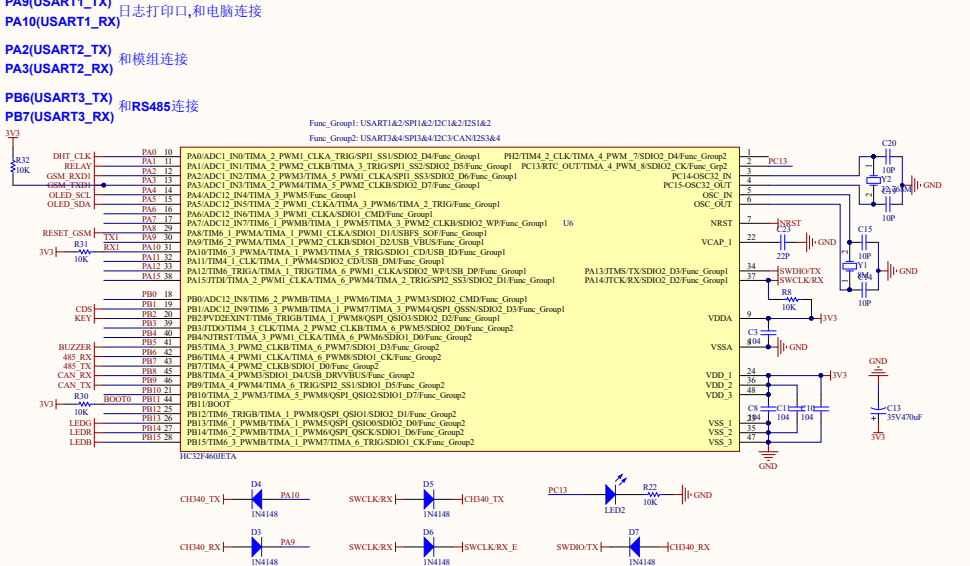
温湿度传感器(DHT11)



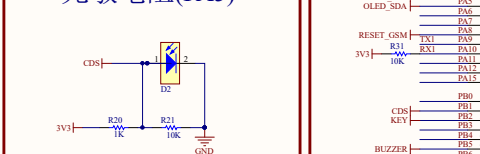
串口分配情况:

- PA9(USART1_TX) 日志打印口,和电脑连接
- PA10(USART1_RX) 和模组连接
- PA2(USART2_TX) 和模组连接
- PA3(USART2_RX) 和模组连接
- PB6(USART3_TX) 和RS485连接
- PB7(USART3_RX) 和RS485连接

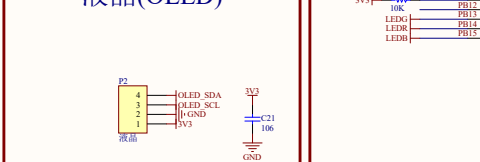
HC32F460JETA



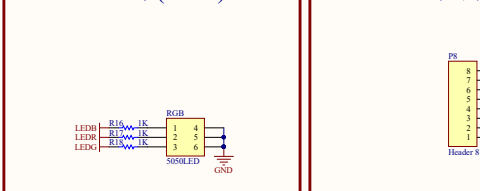
光敏电阻(PA5)



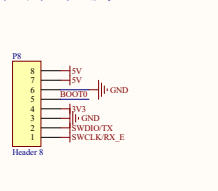
液晶(OLED)



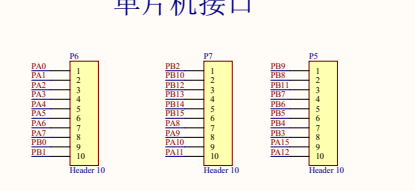
三色灯(RGB)



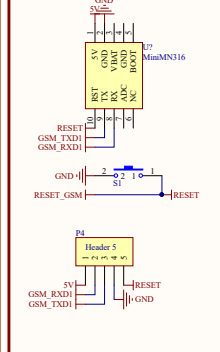
程序下载



单片机接口



BC260Y



所属系列:指路者系列

型号:ZLIOTA

Title		U-F-M5DD-W-L	
Size	Number	Revision	
A2			
Date:	2021-5-27	Sheet of	
File:	F:\AlumDesign\ZLIOTA\HOTB_Sch34	Drawn By:	