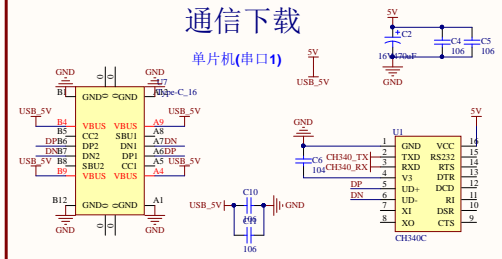
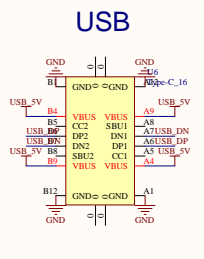


通信下载

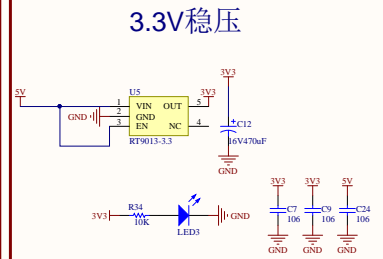
单片机(串口1)



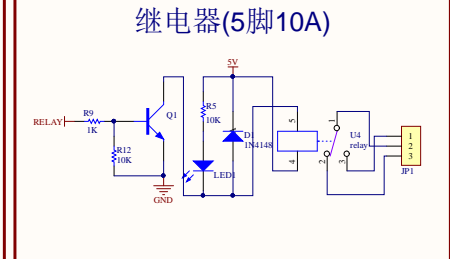
USB



3.3V稳压

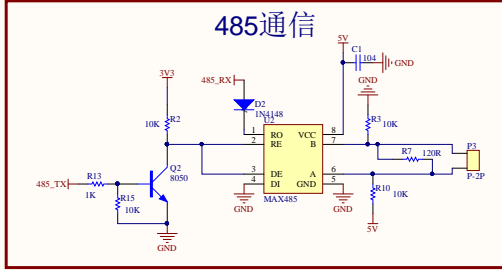


继电器(5脚10A)

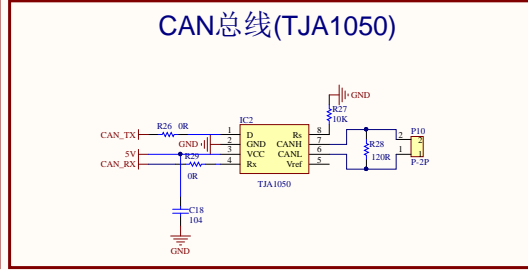


版本:V1.0(预售版)

485通信

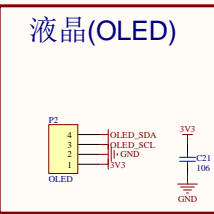
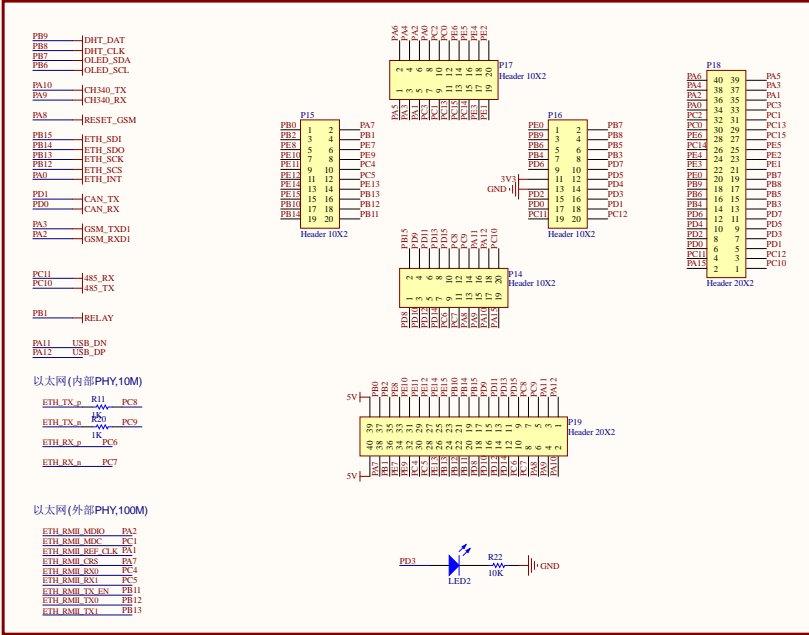
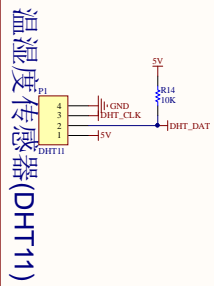
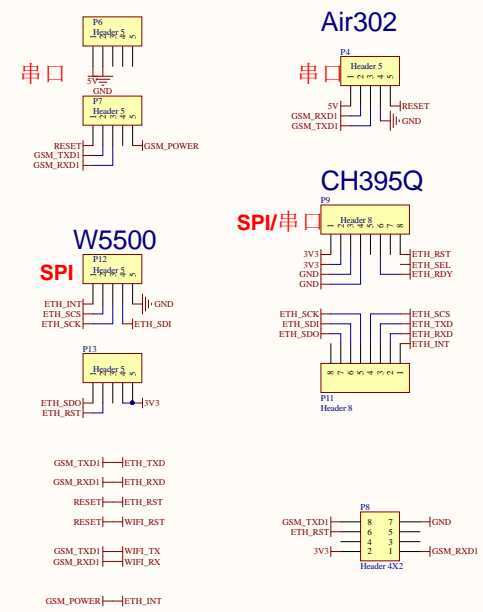


CAN总线(TJA1050)

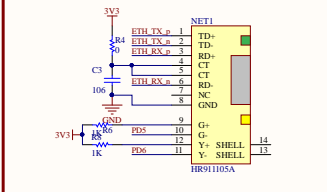


- 1.使用串口通信的模组和单片机的串口2通信
- 2.使用SPI通信的模组和单片机的SPI2通信
- 3.复位模块使用PA8
- 4.以太网模块使用PA0作为中断检测引脚

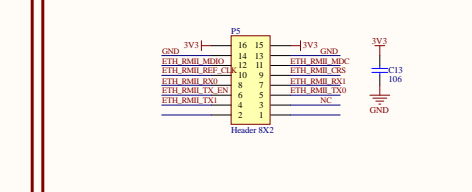
BC260Y/M5311/MN316/SLM130



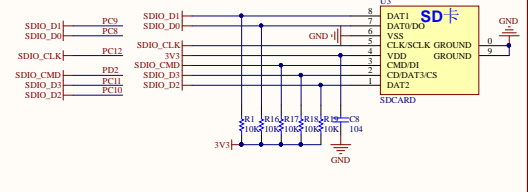
以太网口(内置PHY,10M)



以太网口(外置PHY(RMII),100M)



SD卡



型号:ZLIOTE