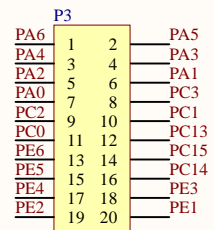
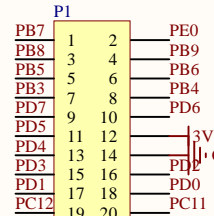
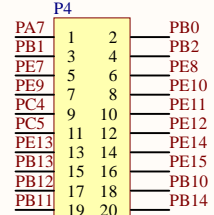
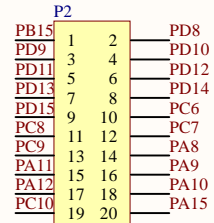


版本:V1.2(预售版)

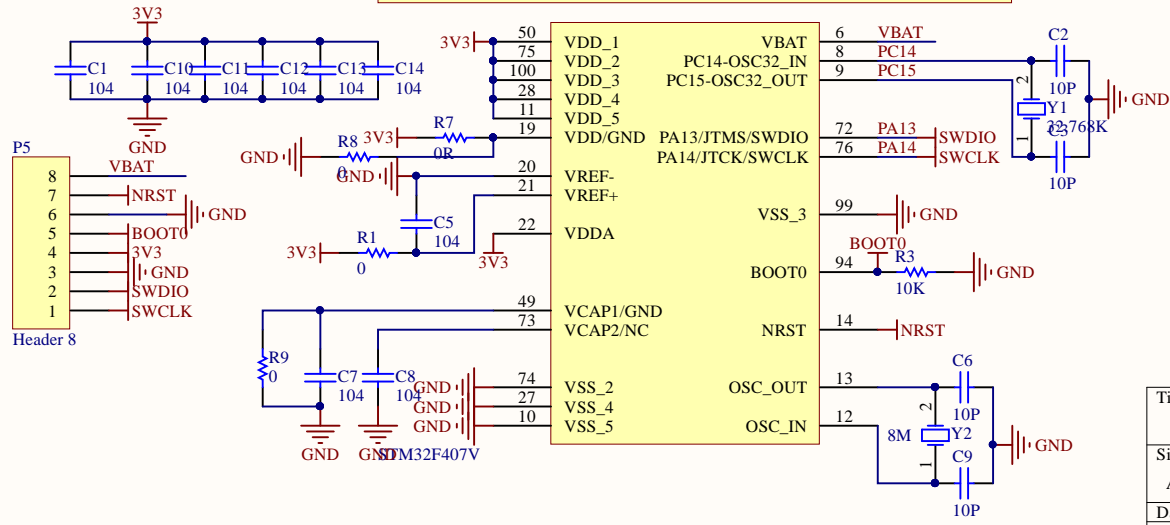
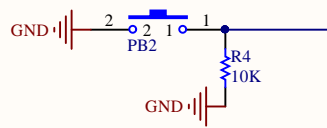
- 1.USB线做等长
- 2.修改SWD丝印标注错误

版本:V1.3(预售版)

- 1.PC6,PC7; PC8,PC9做等长

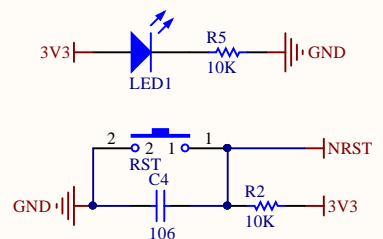


PA0	23	PA0/WKUP/ADC123_IN0/T2CIETR/T5C1/T8ETR	PD0/CAN_Rx/FSMC_D2	81	PD0
PA1	24	PA1/ADC123_IN1/T5C2/T2C2	PD1/CAN_Tx/FSMC_D3	82	PD1
PA2	25	PA2/ADC123_IN2/USART2_Tx/T5C3/T2C3	PD2/UART5_Rx/T3ETR/SDIO_CMD	83	PD2
PA3	26	PA3/ADC123_IN3/USART2_Rx/T5C4/T2C4	PD3/FSMC_CLK	84	PD3
PA4	29	PA4/ADC123_IN4/DAC_OUT1/SPI1_NSS	PD4/FSMC_NOE	85	PD4
PA5	30	PA5/ADC123_IN5/DAC_OUT2/SPI1_SCK	PD5/USART2_Tx/FSMC_NWE	86	PD5
PA6	31	PA6/ADC123_IN6/SPI1_MISO/T8T1BKIN/T3C1	PD6/USART2_Rx/FSMC_NWAIT	87	PD6
PA7	32	PA7/ADC123_IN7/SPI1_MOSI/T8C1N/T3C2/T1C1	PD7/FSMC_NE1/FSMC_NCE2	88	PD7
PA8	67	PA8/T1C1/MCO	PD8/USART3_Tx/FSMC_D13	55	PD8
PA9	68	PA9/T1C2/USART1_Tx	PD9/USART3_Tx/FSMC_D14	56	PD9
PA10	69	PA10/T1C3/USART1_Rx	PD10/FSMC_D15	57	PD10
PA11	70	PA11/CAN_Rx/T1C4/USBDM	PD11/FSMC_A16	58	PD11
PA12	71	PA12/CAN_Tx/T1ETR/USBDP	PD12/T4C1/FSMC_A17	59	PD12
PA15	77	PA15/JTDI/I2S3_WS/JTDI/T2CIETR/SPI3_NSS	PD13/T4C2/FSMC_A18	60	PD13
			PD14/T4C3/FSMC_D0	61	PD14
			PD15/T4C4/FSMC_D1	62	PD15
PB0	35	PB0/ADC123_IN8/T3C3/T8C2N/T1C2N	PC0/ADC123_IN10	15	PC0
PB1	36	PB1/ADC123_IN9/T3C4/T8C3N/T1C3N	PC1/ADC123_IN11	16	PC1
PB2	37	PB2/BOOT1	PC2/ADC123_IN12	17	PC2
PB3	89	PB3/JTDO/SPI3_SCK/I2S3_CK/T2C2/SPI1_SCK	PC3/ADC123_IN13	18	PC3
PB4	90	PB4/NJTRST/SPI3_MISO/T3C1/SPI1_MISO	PC4/ADC123_IN14	33	PC4
PB5	91	PB5/I2C1_SMBA/I2S3_SD/SPI3_MOSI/T3C2/SPI1_MOSI	PC5/ADC123_IN15	34	PC5
PB6	92	PB6/I2C1_SCL/T4C1/USART1_Tx	PC6	63	PC6
PB7	93	PB7/I2C1_SDA/FSMC_NADV/USART1_Rx	PC7	64	PC7
PB8	95	PB8/SDIO_D4/I2C1_SCL/T4C3(7)/CAN_Rx	PC8/T8C3/T3C3/SDIO_D0	65	PC8
PB9	96	PB9/SDIO_D5/I2C1_SDA/T4C4/CAN_Tx	PC9/T8C4/T3C4/SDIO_D1	66	PC9
PB10	47	PB10/USART3_Tx/I2C2_SCL/T2C3	PC10/UART4_Tx/SDIO_D2	78	PC10
PB11	48	PB11/USART3_Rx/I2C2_SDA/T2C4	PC11/UART4_Rx/SDIO_D3	79	PC11
PB12	51	PB12/I2S2_WS/T1BKIN/SPI2_NSS/I2C2_SMBA	PC12/UART5_Tx/SDIO_CK	80	PC12
PB13	52	PB13/I2S2_CK/T1CH1N/SPI2_SCK	PC13-TAMPER-RTC	7	PC13
PB14	53	PB14/T1CH2N/SPI2_MISO			
PB15	54	PB15/I2S2_SD/T1CH3N/SPI2_MOSI			
PE0	97	PE0/T4_ETR/FSMC_NBL0		39	PE8
PE1	98	PE1/FSMC_NBL1	PE8/FSMC_D5/T1CH1N	40	PE9
PE2	1	PE2/TRACECK/RSMC_A23	PE9/FSMC_D6/T1C1	41	PE10
PE3	2	PE3/TRACED0/FSMC_A19	PE10/FSMC_D7/T1CH2N	42	PE11
PE4	3	PE4/TRACED1/FSMC_A20	PE11/FSMC_D8/T1C2	43	PE12
PE5	4	PE5/TRACED2/FSMC_A21	PE12/FSMC_D9/T1CH3N	44	PE13
PE6	5	PE6/TRACED3/FSMC_A22	PE13/FSMC_D10/T1C3	45	PE14
PE7	38	PE7/FSMC_D4/T1ETR	PE14/FSMC_D11/T1C4	46	PE15
			PE15/FSMC_D12/T1BKIN		



原理图按照STM32F407VET6展示,
STM32和CH32的通用GPIO完全一致,
GPIO的第二功能需要参考对应的手册

贴STM32F407VET6时---移除 R8,R9
贴CH32V307VCT6时---移除 R7,C8



Title		
Size	Number	Revision
A4		
Date:	2022/3/18	Sheet of
File:	F:\AltiumDesigner\...\MiniSTM32F407VET6\SchDoc	